

Trail Descriptions

We feel it is important to acknowledge that the Carpenter Nature Center Wisconsin Campus is Dakota Homeland. This area is significant to past, present, and future generations of Dakota People. It is our intent that this acknowledgement will ground us, leading us to listen, to hear, to learn, and to act as we look to the future.

BIG BLUESTEM TRAIL

p̄heží šašá ókhihe th̄an̄k̄in̄k̄in̄yan̄ č̄an̄kú

This relatively flat trail circles the west half of the restored prairie between South and East Cove Roads. The trail totals about 0.8 miles, with elevation varying 20 feet at the highest and lowest points. There is access to parking and the Greenwald Information Kiosk.

LITTLE BLUESTEM TRAIL p̄heží šašá swúla č̄an̄kú

A sister to the Big Bluestem trail, this 0.8 mile loop circles the east half of the restored prairie between South and East Cove Roads. Take a break to enjoy the council ring.

GOLDENROD TRAIL wāh̄č̄áziblu č̄an̄kú

Use this 0.25 mile trail to connect to the prairie trails from the Ridgeline Trail. Experience this flat grassland area as you walk alongside the main driveway.

INDIGO TRAIL sūn̄k̄th̄awote č̄an̄kú

This short 0.2 mile walk has a wide variety of plants from pine trees to prairie plants. In early summer, look for blooming Indigo in the prairie.

LAURIE & AL HEIN TRAIL

Beginning from the Acorn Trail entrance, this 0.25 mile trail is surrounded by tall trees and is located in the middle of a deciduous forest. This trail was a favorite walk for Al and Laurie Hein when they lived on this property.

RIDGELINE TRAIL m̄dam̄data č̄an̄kú

This 0.63 mile trail includes a hike into and out of a moderately sloped, large basin full of vegetation. From the top edge of the basin, take a glimpse of the spectacular view.

ACORN TRAIL úta č̄an̄kú

This 1.2 mile narrow trail winds around a deciduous forest and includes areas with steep slopes. Look for deer, squirrels, woodpeckers, and owl nests along the way.

Easily Accessible
↑
↓
More Adventurous

Welcome!

Carpenter Nature Center (CNC) is a 501(c)(3) private, non-profit organization with the mission of fostering a lifelong appreciation of the natural world through environmental education, habitat conservation, and outdoor experiences.

Locations

MINNESOTA CAMPUS

12805 St. Croix Trail South
Hastings, MN 55033

WISCONSIN CAMPUS

279 South Cove Road
Hudson, WI 54016

Hours: 8:00 am - 4:30 pm daily.

Trails, buildings, parking lots, and front gates close daily at 4:30pm.

(Closed New Years Day, Easter Sunday, Thanksgiving Day, and Christmas Day)

Get Involved

Pursuing our mission would not be possible without the financial support of donors and the dedication of hardworking volunteers.

To help CNC serve the community, scan the QR codes below or visit www.carpenternaturecenter.org.



DONATE



VOLUNTEER

If you feel lost on the trails or would like to alert staff to trail maintenance needs, call (651) 437—4359.

Enjoy Your Visit!

Wisconsin Campus TRAIL MAP



Carpenter St. Croix Valley Nature Center

Visitor center, paved parking lot,
and front gate open

8:00am—4:30pm daily.

Trails open sunrise to sunset.

www.carpenternaturecenter.org



Carpenter Nature Center Wisconsin Campus

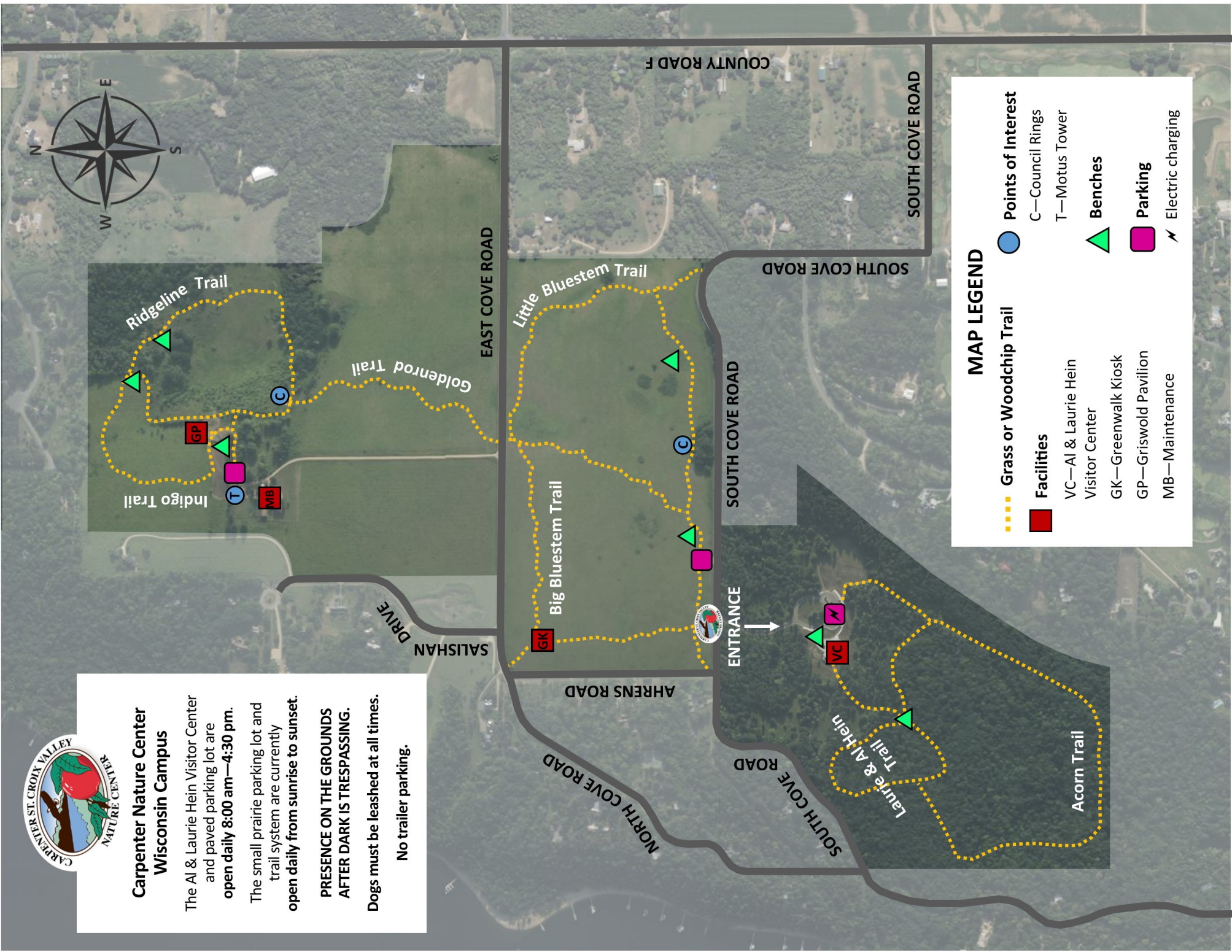
The Al & Laurie Hein Visitor Center and paved parking lot are **open daily 8:00 am—4:30 pm.**

The small prairie parking lot and trail system are currently **open daily from sunrise to sunset.**

PRESENCE ON THE GROUNDS AFTER DARK IS TRESPASSING.

Dogs must be leashed at all times.

No trailer parking.



MAP LEGEND

- ⋯ Grass or Woodchip Trail
- **Facilities**
 - VC—Al & Laurie Hein Visitor Center
 - GK—Greenwalk Kiosk
 - GP—Griswold Pavilion
 - MB—Maintenance
- **Points of Interest**
 - C—Council Rings
 - T—Motus Tower
- ▲ **Benches**
- **Parking**
 - ⚡ Electric charging