

Minnesota Campus TRAIL MAP



Carpenter St. Croix Valley Nature Center

Open 8:00 am - 4:30 pm daily.
Trails, buildings, parking lots, and
front gates close at 4:30pm.

(651) 437-4359
www.carpenternaturecenter.org

Welcome!

Carpenter Nature Center (CNC) is a 501(c)(3) private, non-profit organization with the mission of fostering a lifelong appreciation of the natural world through environmental education, habitat conservation, and outdoor experiences.

Locations

MINNESOTA CAMPUS
12805 St. Croix Trail South
Hastings, MN 55033

WISCONSIN CAMPUS
279 South Cove Road
Hudson, WI 54016

Hours: 8:00 am - 4:30 pm daily.
Trails, buildings, parking lots, and front gates
close daily at 4:30pm.
(Closed New Years Day, Easter Sunday,
Thanksgiving Day, and Christmas Day)

Get Involved

Pursuing our mission would not be possible
without the financial support of donors and
the dedication of hardworking volunteers.

To help CNC serve the community,
scan the QR codes below or visit
www.carpenternaturecenter.org.



DONATE



VOLUNTEER

If you feel lost on the trails or
would like to alert staff to
trail maintenance needs,
call (651) 437-4359.

Enjoy Your Visit!

TRAIL DESCRIPTIONS

SELF-GUIDED TRAIL

Pick up our Self-guided Trail booklet and be your own teacher as you wind through the many habitats present at CNC. This easy paved walk has a series of numbered checkpoints where you can stop to learn about some of the natural wonders you may see while on your visit.

SAVANNA TRAIL

Beginning near the Pergola, this mowed-grass trail leads you through grassland and oak savanna. It connects with the Self-guided Trail at the River Overlook.

BEACH TRAIL

As you walk through a deciduous forest, this 0.1 mile steep woodchip trail brings you down the ravine to the river. The trail is accessed at the top by the Self-guided Trail and at the bottom by the Railroad Bed Trail.

SOUTH RIVER BLUFF TRAIL

This steeply sloped woodchip trail, accessed at the top by the Self-guided Trail, winds among limestone ledges 0.1 mile down to the Railroad Bed Trail by the river.

RAILROAD BED TRAIL

After descending by either the Beach Trail, the North River Bluff Trail, or the South River Bluff Trail, follow this 0.75 mile grass trail along the beautiful St. Croix River.

NORTH LOOP TRAIL

Accessed via the Self-guided Trail, this 1.0 mile paved trail, which circles an old orchard, offers a view of our "sugarbush", where sap is collected from boxelder trees in the spring for making pure maple syrup. The trail also passes the Trailside Lodge and pine plantation.

NORTH RIVER BLUFF TRAIL

Beginning from the North Loop Trail, this moderately steep woodchip trail goes for 0.7 miles to the Railroad Bed Trail which runs along the St. Croix River.

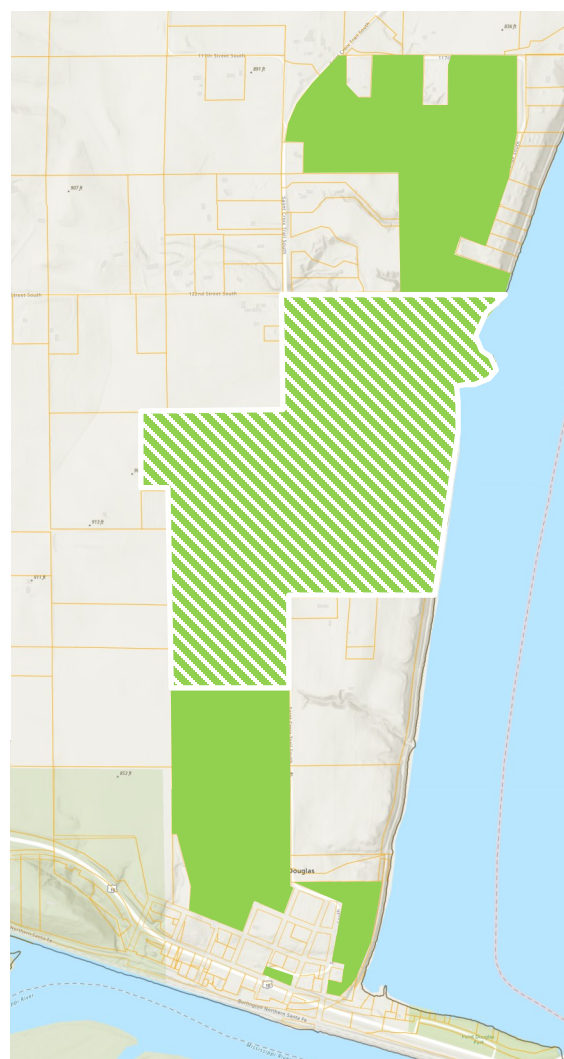
RED CEDAR TRAIL

An extension of the North Loop Trail, this 0.3 mile gently sloping woodchip trail brings the visitor deeper into the woods overlooking the breathtaking ravine.

PRAIRIE LOOP TRAILS

Visit our prairie restoration site across Cty. Rd. 21 to see native prairie plants in the spring, summer, and fall. The outer grass loop is 1.4 miles with several mowed paths that branch off throughout the prairie.

Carpenter Nature Center Comprehensive Minnesota Land Holdings



- CNC PROPERTY
- CNC PROPERTY MANAGED FOR PUBLIC USE INCLUDING TRAILS

See reserve side for trail map

POINTS OF INTEREST



G—Gazebo



P—Pergola



B—Bird Observation



L—Ravine Lookout



D*— Lake CNC
Education Dock



D*— St. Croix River
Education Dock

* Not available during winter months



R—River Overlook

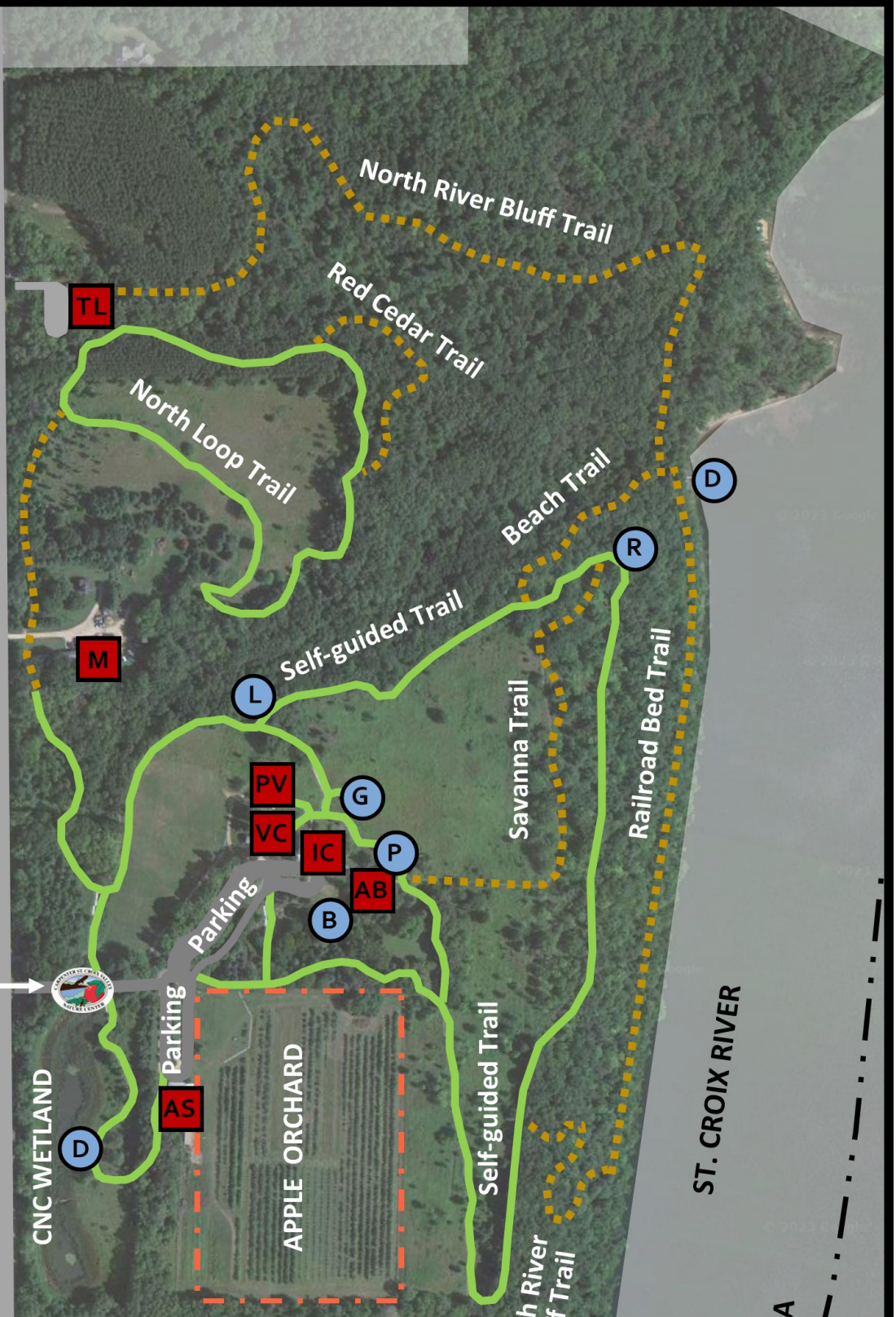
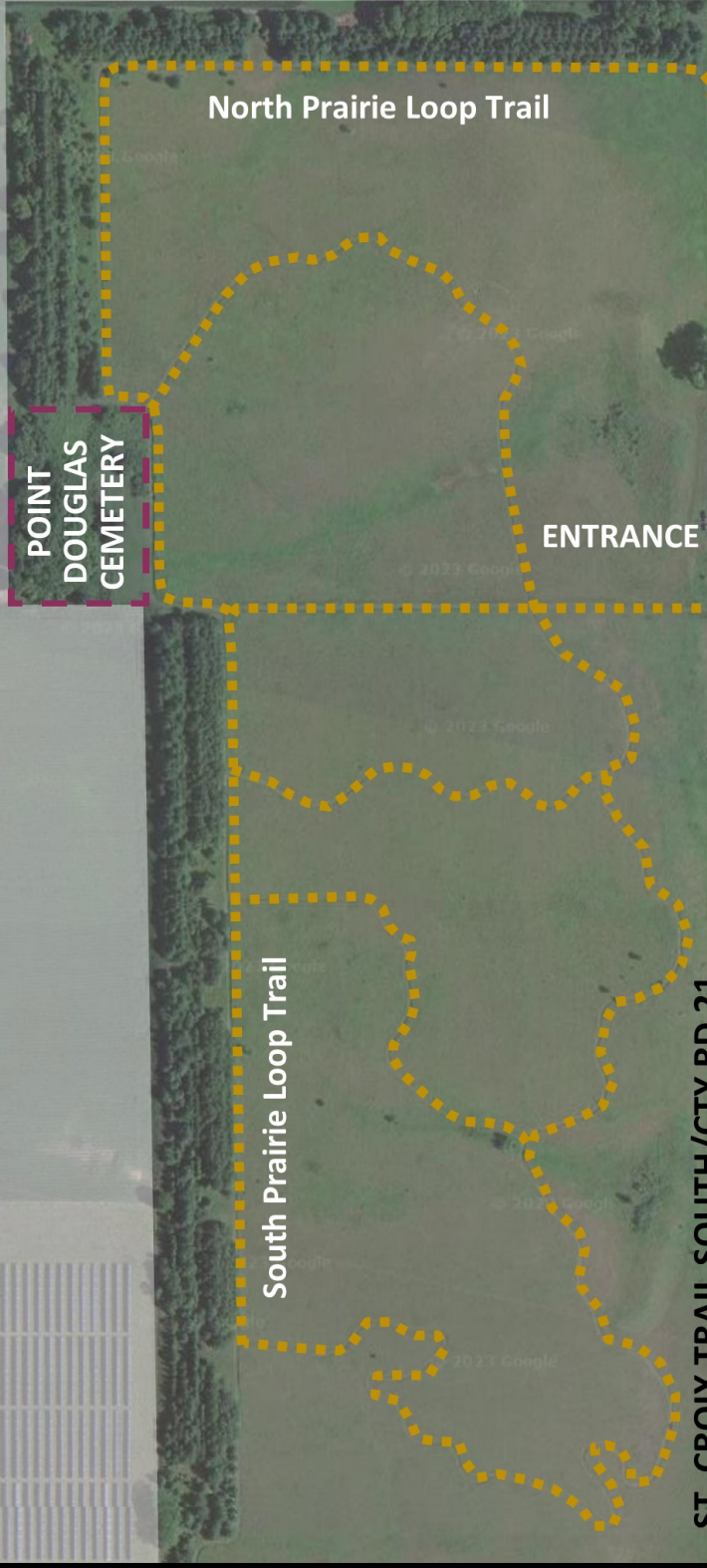
SEE REVERSE FOR FULL MAP OF
PROPERTY AND FACILITIES

122ND STREET SOUTH



**Welcome to
Carpenter Nature Center**
Trails are intended for walking
and mobility scooters only
All dogs must be on leash
Please show respect for
plants and wildlife
Thank you for visiting

ST. CROIX TRAIL SOUTH/CTY RD 21



MAP LEGEND

- Paved Trail
- - - - - Grass or Woodchip Trail

- **Facilities**
- VC—Visitor Center
- PV—Pavilion
- IC—Interpretive Center
- AB—Administration
- AS—Apple Shack
- M—Maintenance
- TL—Trailside Lodge

- **Points of Interest**
- G—Gazebo
- P—Pergola
- B—Bird Observation Station
- D—Education Dock
- L—Ravine Lookout
- R—River Overlook

FACILITIES



VC—Visitor Center
Open to Public · Exhibits
Live Animals · Restrooms



PV—Pavilion
Special Events
Rentals



IC—Interpretive Center
School Groups
Summer Camps



AB—Administration
Staff Offices
Operations



AS—Apple Shack
Open for apple sales
during harvest season



TL—Trailside Lodge
School Groups
Rentals

SEE REVERSE FOR INFORMATION ABOUT POINTS OF INTEREST →